

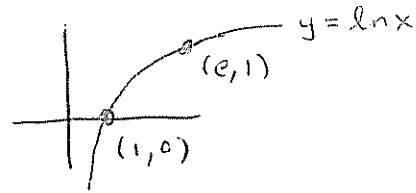
Math 5B - Weekly quiz VII
05/20/2010

NAME: Ellie Grano

Grade: /3

Evaluate the line integral $\int_C x^2 dy$, where C is the arc of the curve $y = \ln x$ from $(1, 0)$ to $(e, 1)$.

$$c(t) = (e^t, t) \quad 0 \leq t \leq 1$$
$$c'(t) = (e^t, 1)$$



$$\int_C x^2 dy = \int_0^1 (e^t)^2 \cdot 1 \cdot dt$$

$$= \frac{1}{2} e^{2t} \Big|_0^1 = \boxed{\frac{1}{2} e^2 - \frac{1}{2}}$$